

TIMBER
STAND TABLE

TRACT: FLURRY

PLACE: Office of John G. Guthrie and Sons, Inc.
114 E. Cavers Ave., Wiggins, MS 39577

DESCRIPTION: George County, Mississippi
Township 3 South, Range 8 West
Section 33: Part of SW 1/4
48 Acres, more or less as per attached map.

SIZE DBH	PINE ST	CHIP-N- SAW	SPRUCE PINE ST	OAK ST	GUM ST	Bay&Poplar ST	MAPLE ST	PINE PWD	HWD PWD
4 "									
6 "								140	1000
8 "								70	650
9 "		13						20	
10 "		69	1					10	500
11 "		56	1						
12 "		94	5	64	15	1			250
13 "		118							
14 "	156		9	128	60	2	1		20
15 "	127		3						
16 "	155		9	98	24	6	2		
18 "	159		6	59	8				10
20 "	84		4	37	2				
22 "	47		1	9	1				
24 "	24			3					
26 "	5			1					
28 "	1								
30 "									
TOTAL TREES:	758	350	39	399	110	9	3	240	2,430
VOLUME (Doyle):	160,264 BF	18,084 BF	5,053 BF	32,282 BF	8,383 BF	792 BF	189 BF		
AV VOL/TREE:	BF	52 BF	130 BF	81 BF	76 BF	88 BF	63 BF		
VOLUME /Ton:	1,360 /T	192 /T	70 /T	275 /T	71 /T	6.9 /T		44 /T	662 /T
VOLUME (Cords):		72 Cds						17 Cds	250 Cds
AV VOL/TREE:		0.21 Cds						0.07 Cds	0.10 Cds

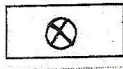
SUMMARY			
	<u>Trees</u>		
Pine Poles, Pine ST, Spruce & C-N-S:	1,147	183,401 BF (Doyle)	160 Av BF/Tree
Hardwood Sawtimber:	521	41,646 BF (Doyle)	80 Av BF/Tree
Pine Pulpwood:	240	17 Cords	0.07 Av Cd/Tree
Hardwood Pulpwood:	2,430	250 Cords	0.10 Av Cd/Tree

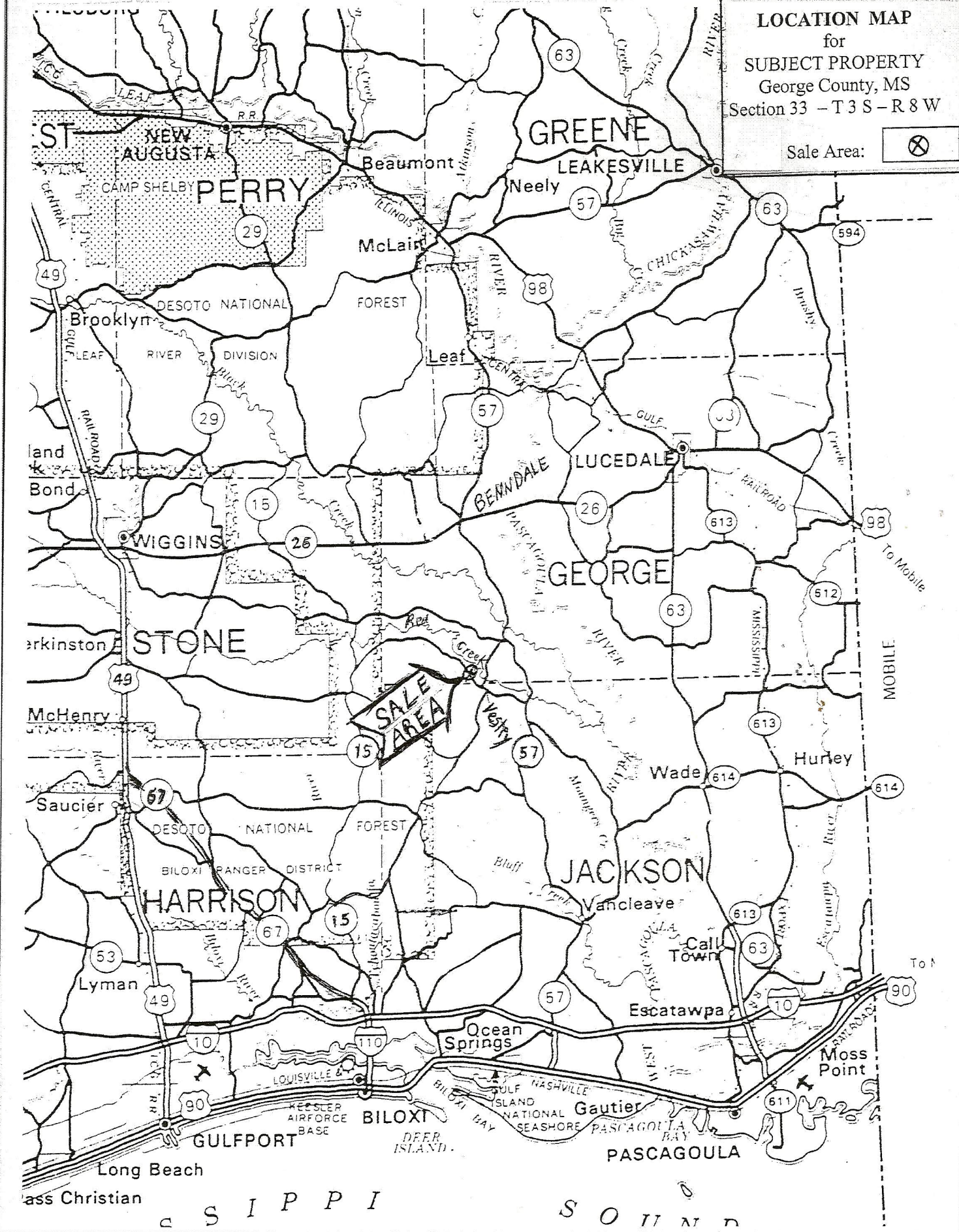
NOTE: Sizes listed above are "Diameter Breast High", that is 4 1/2 feet above ground and measured in inches. The boardfoot volumes are by the Doyle Scale. The cord volumes are in standard cords of 128 cubic feet. These volumes are not guaranteed in any way, but are our estimated volumes based on a careful cruise of pulpwood trees. A 100 % count of Sawtimber and Chip-N-Saw trees were Marked with BLUE paint.

JOHN G. GUTHRIE and SONS, INC.

John G. Guthrie, Jr., R.F. #28

LOCATION MAP
 for
SUBJECT PROPERTY
 George County, MS
 Section 33 - T 3 S - R 8 W

Sale Area: 



MISSISSIPPI SOUND

SECTION PLAT SHEET

OWNER Flurry

DATE July 7, 2016

SECTION 33

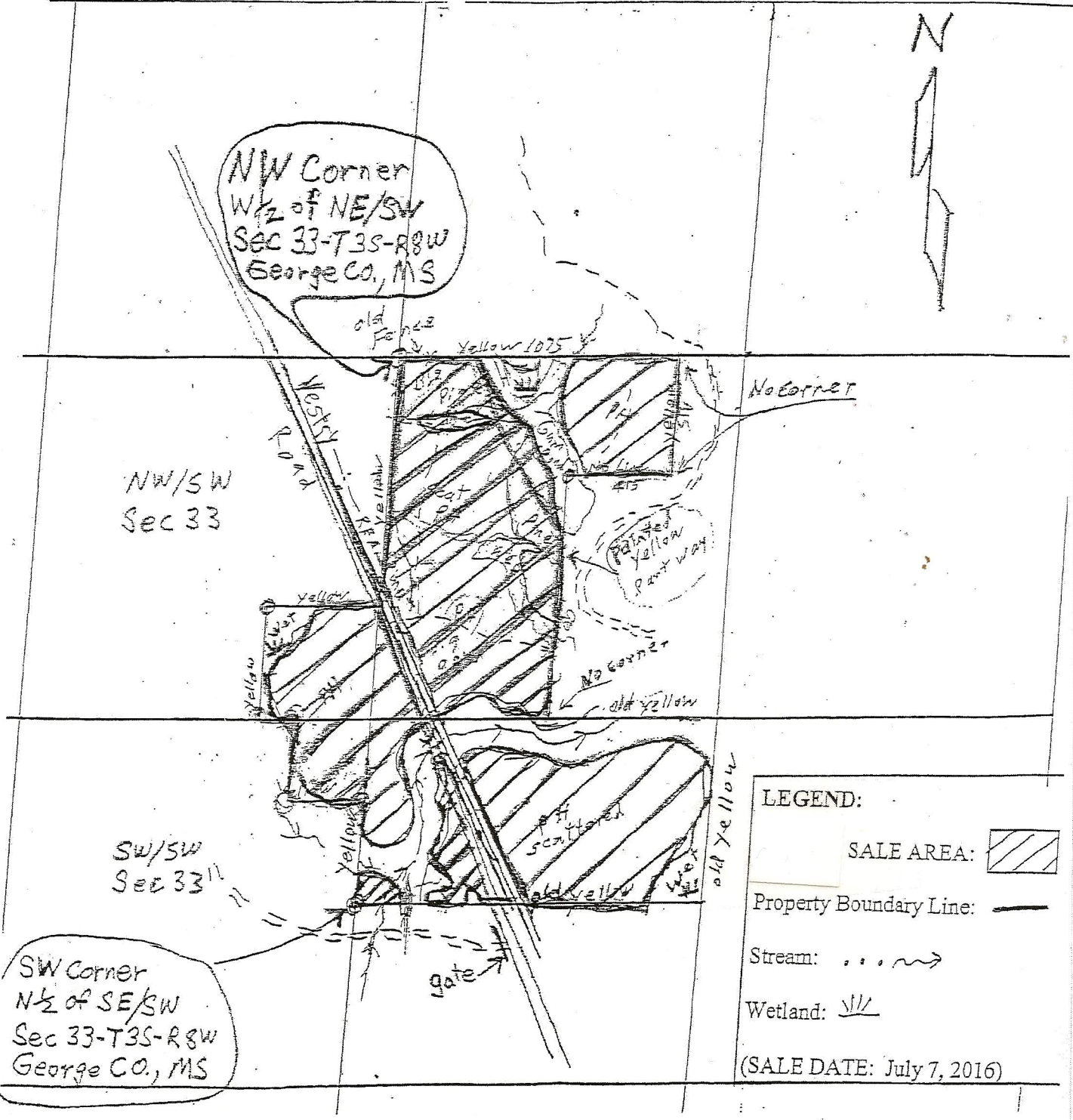
TOWNSHIP 3 South

RANGE 8 West

COUNTY George

STATE Mississippi

SCALE 2 1/2 inch = 1/4 Mile



NW Corner
1/2 of NE/SW
Sec 33-T3S-R8W
George Co., MS

NW/SW
Sec 33

SW/SW
Sec 33

SW Corner
1/2 of SE/SW
Sec 33-T3S-R8W
George Co., MS

LEGEND:

SALE AREA:

Property Boundary Line:

Stream:

Wetland:

(SALE DATE: July 7, 2016)