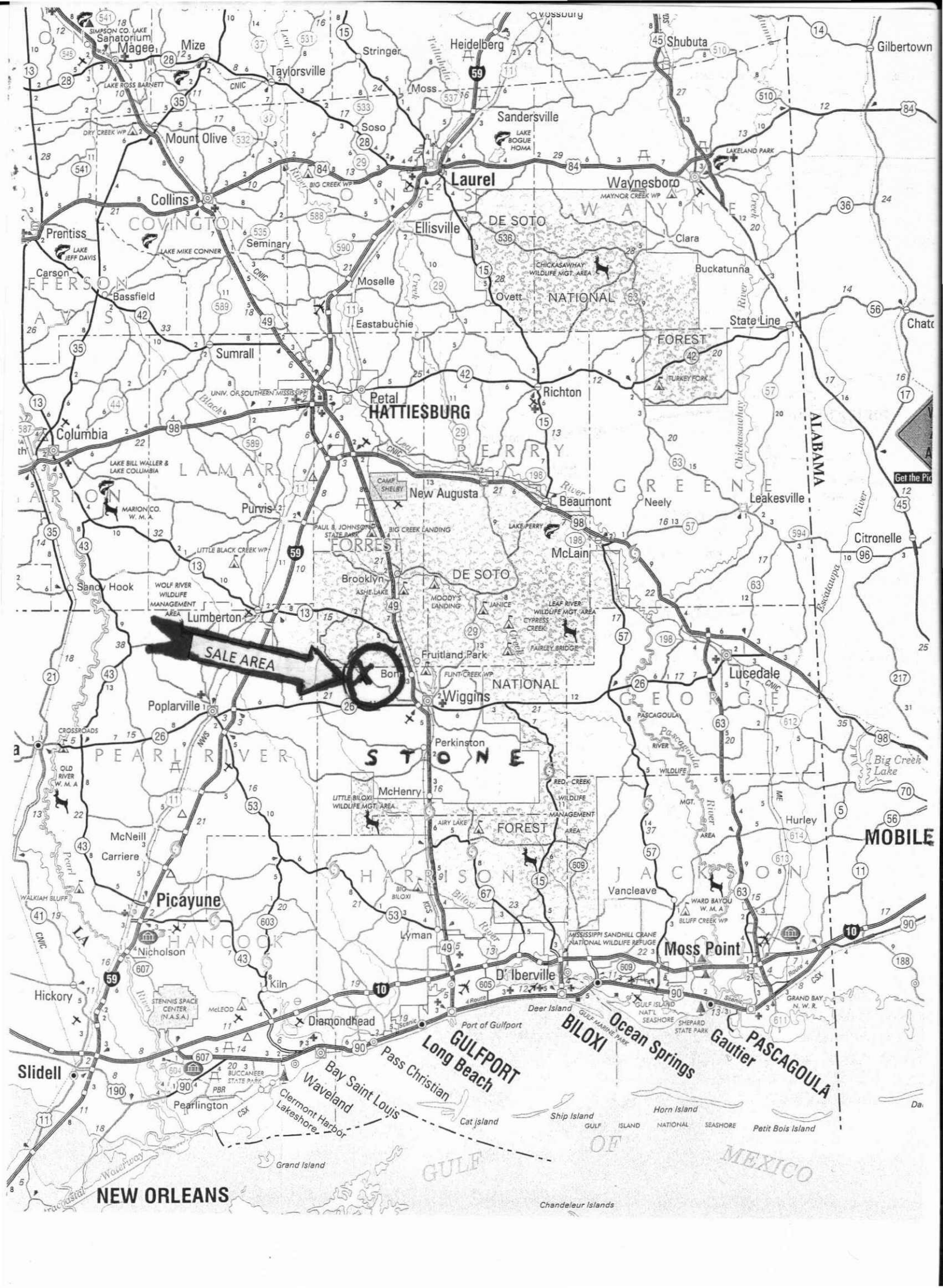


## TRACT INFORMATION

WILES PROPERTY  
25.17 ACRES

This rural tract is located in the northwest part of Stone County, Mississippi, approximately 5.5 miles northwest of Wiggins, the county seat of Stone County. The property lies approximately 200 feet south of New Hope Road, a county blacktop road. The tract has access via a gravel road and is bordered on the north and west boundary lines by a gravel/dirt road.

The land is flat. It has a stand of young to medium sized hardwood trees and some pine trees that are randomly dispersed throughout the entire tract. In our opinion the easy access and central location make it a good choice for a host of outdoor recreational uses. If you can think of any way that we can be of assistance to you with this tract, please do not hesitate to call. (Cell # 601-408-0832)



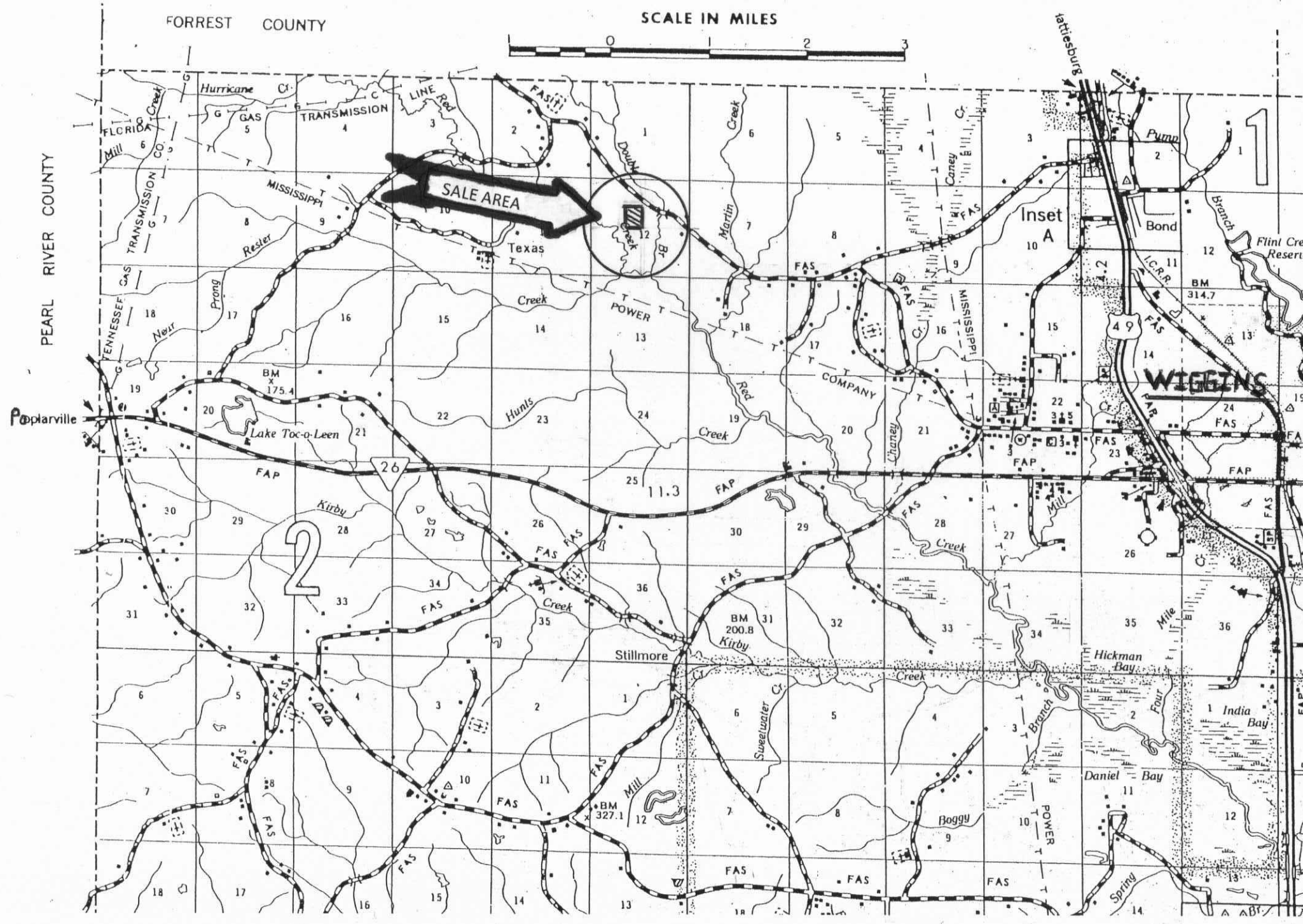
**SALE AREA**



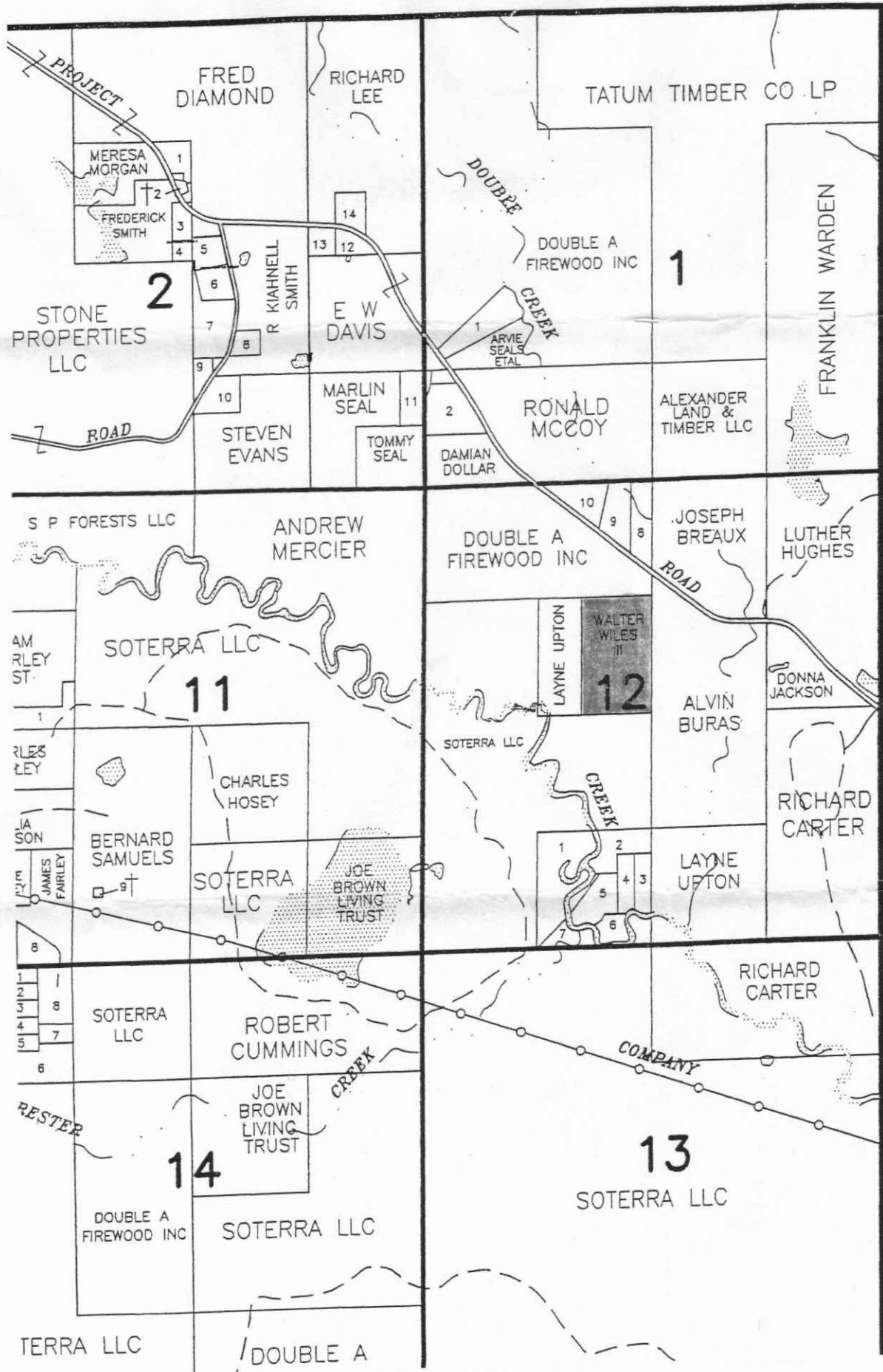
**NEW ORLEANS**

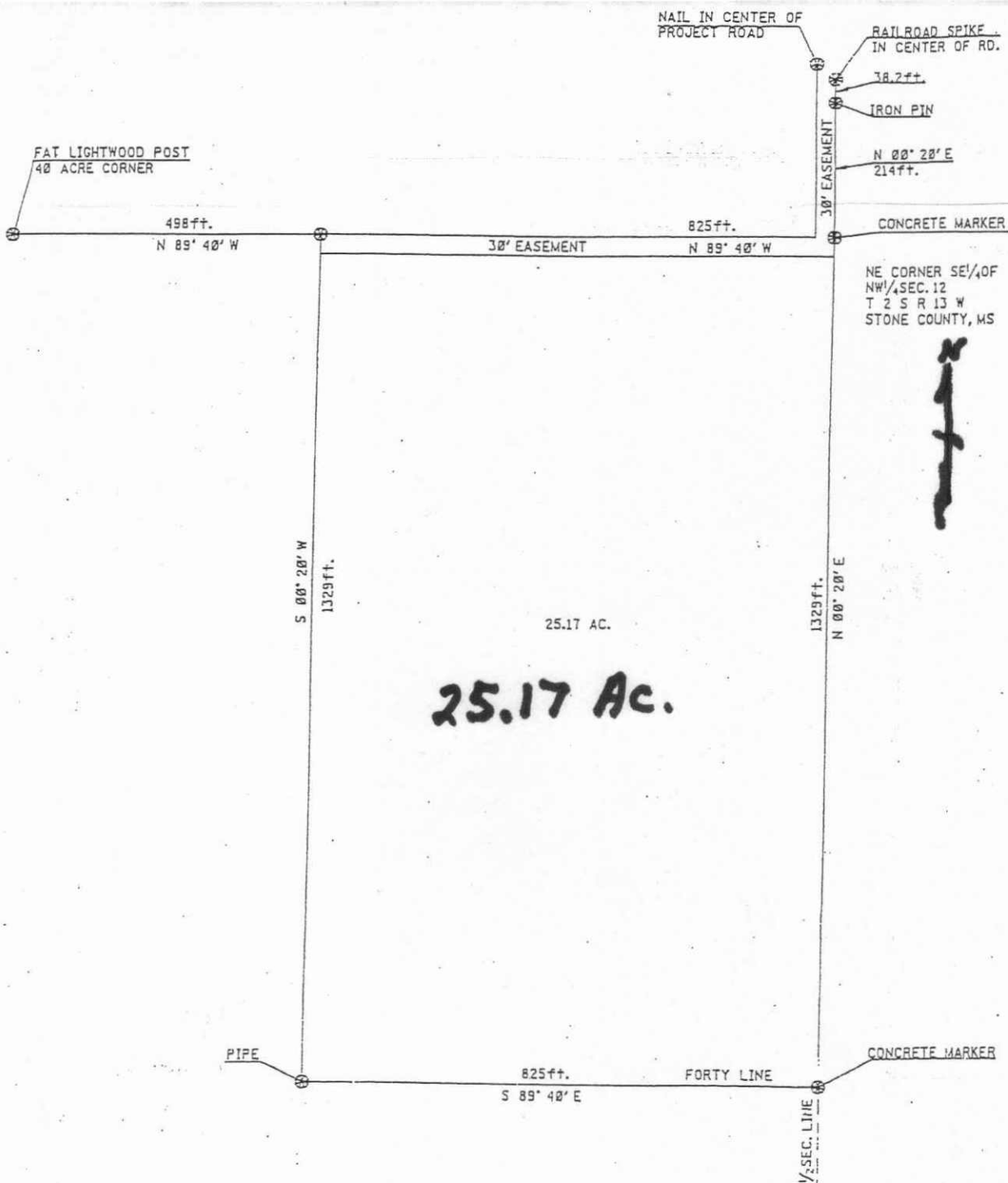
**MOBILE**

**GULF OF MEXICO**



**WILES PROPERTY**  
 Stone County, Mississippi  
 Township 2 South, Range 13 West  
 Section 12: E 825' of SE ¼ of NW ¼





Begin at the Northeast corner of the Southeast 1/4 of the Northwest 1/4 of Section 12, Township 2 South, Range 13 West, Stone County, Mississippi; thence N 89°40'W along the North forty line of the SE 1/4 of the NW 1/4 a distance of 825 feet; thence S 0°20'W a distance of 1329 feet; thence S 89°40'E along the South forty line of said SE 1/4 of the NW 1/4 a distance of 825 feet to the SE corner; thence N 0°20'E along the half section line a distance of 1329 feet to the POINT OF BEGINNING, containing 25.17 acres, more or less, and all being in the SE 1/4 of the NW 1/4, Section 12, Township 2 South, Range 13 West, Stone County, Mississippi.

In this parcel is an access easement along the northerly boundary, which is more particularly described as: Commence at the NE corner of SE 1/4 of NW 1/4 of section 12, T 2 S, R 13 W, Stone County, Mississippi; thence run S 0°20' W a distance of 30 feet; thence N 89°40' W a distance of 825 feet; thence N 0°20' E a distance of 30 feet; thence run S 89°40' E a distance of 825 feet along the North line of said SE 1/4 of NW 1/4 to the POINT OF BEGINNING.

RICHARD ALLEN LEE  
 PROFESSIONAL ENGR.  
 & LAND SURVEYOR  
 WIGGINS, MS